

# Local Area Network Office Messaging System

## End User Manual

Ali Cheddadi  
Nikhil Kodakandla  
Shreejan Paudel

December 02, 2020

COSC/ITEC 3506

Dr. Amandeep Patti

Fall 2020

Algoma University



## Contents

1. Login Page .....	3
2. Main Screen .....	4
2.1 Messaging .....	4
2.2 Search.....	5
2.3 Settings.....	6
2.3.1 Window Settings .....	6
2.3.2 User Settings .....	6

## 1. Initial Setup

Before starting the LANOMS application, LANOMS server needs to be initialized through Eclipse. This can be done by running **ServerController.java** file. After this process is completed, running **ClientDriver.java** file opens the LANOMS application.

## 2. Login Page

Once opened, Users are presented with a Login Page as shown in **Figure 1**. Users are expected to enter their designated Username & Password into their respective fields. Once appropriate credentials entered, pressing the login button results in the main page being opened. This procedure can be tested by running multiple ClientDriver.java files and using the following usernames and passwords.

Username	Password
ali	test
nik	test
shree	test

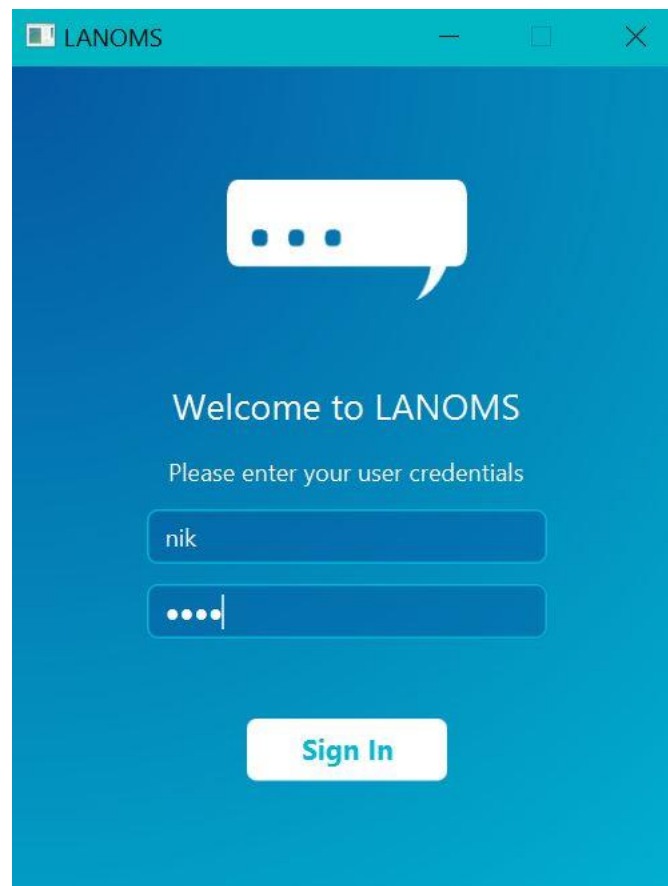


Figure 1 Login Page

### 3. Main Screen

Upon successful login, users are presented with the main page of the LANOMS application as shown in **Figure 2**. The main screen is divided into three different sections namely Navigation Pane, Selection Pane, Description Pane. The purpose and function of Each Pane is discussed below.

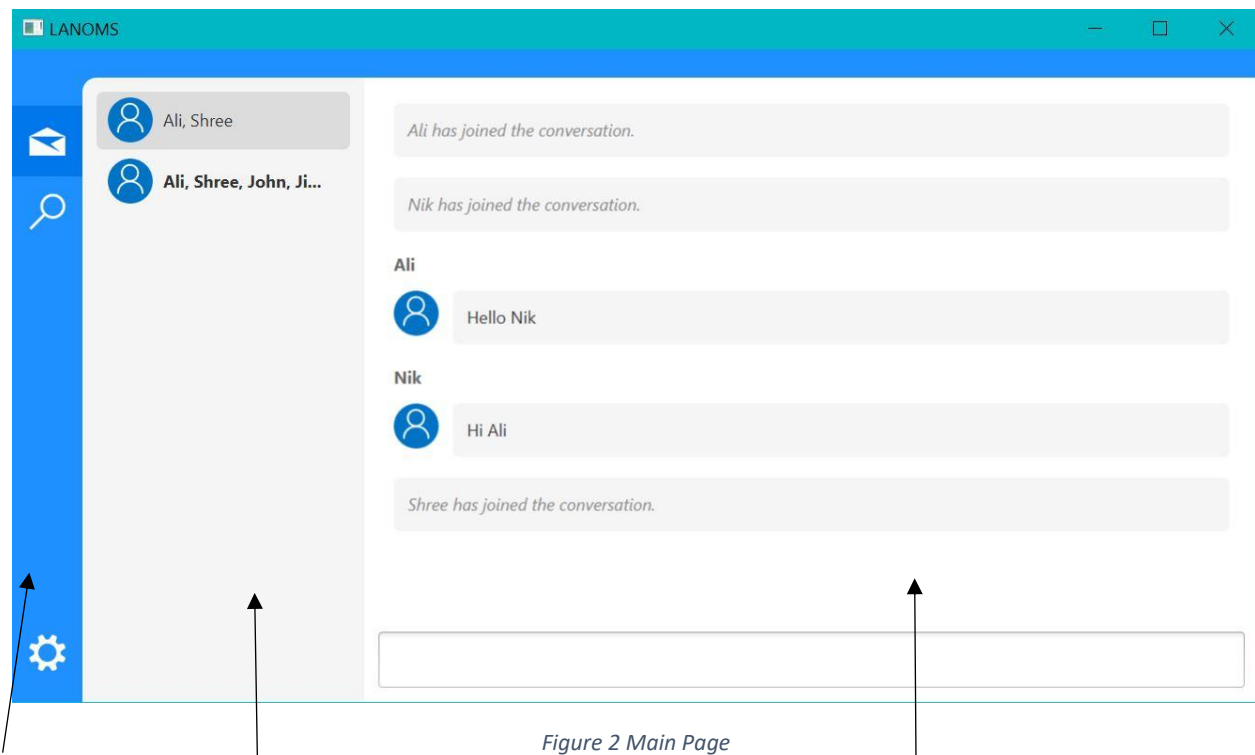


Figure 2 Main Page

Navigation Pane

Selection Pane

Description Pane

#### 3.1 Messaging

Users can view their message inbox by pressing the Message Icon located under the Navigation Pane. Clicking the Message Icon populates the Selection Pane with their conversations. Clicking on a particular conversation in the selection pane displays the particular conversation thread in the Description pane. Users can continue a particular conversation by simply typing their next message in the text field located in the bottom of the Description Pane. Once typed, clicking the ENTER key will send the message to the intended recipient.

### 3.2 Search

Users can search the company contact list by selecting search icon under the Navigation Pane as shown in **Figure 3**. Clicking the search icon results in contacts being populated in the Selection Pane. Selecting a particular contact in the selection pane displays the contact details in the Description Pane. In the description Pane users can use the option “Open New Conversation” to initiate a new conversation with the particular contact.

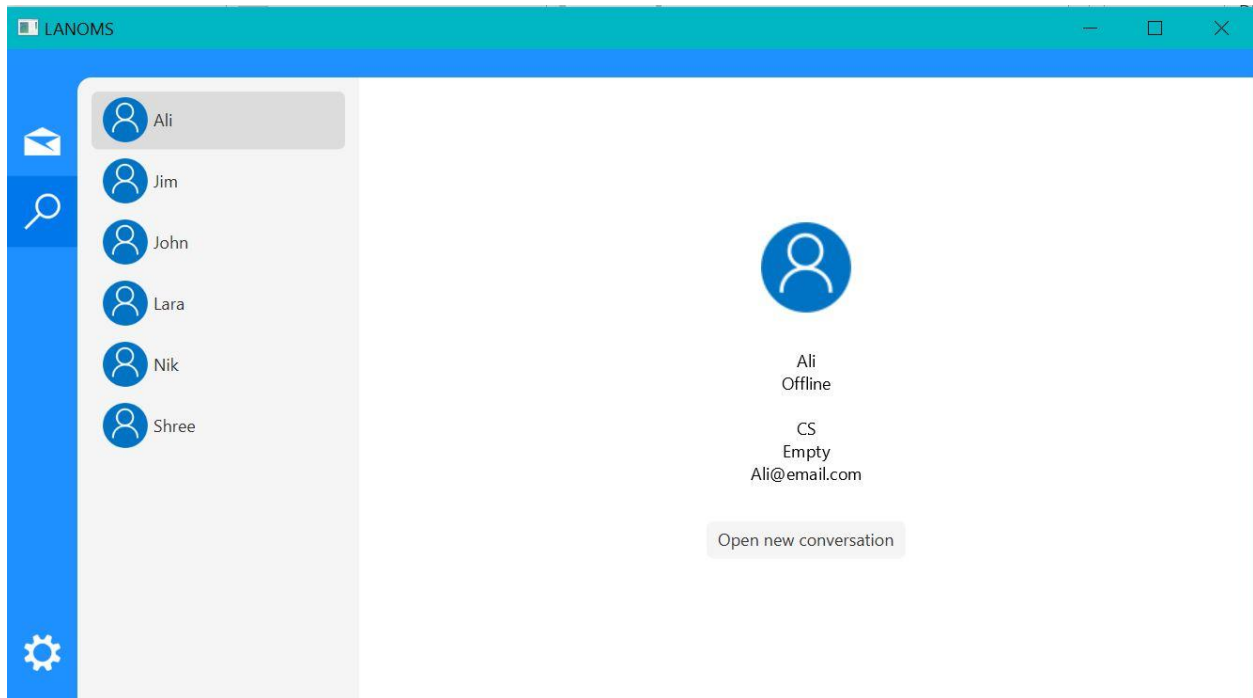


Figure 3 Search Page

### 3.3 Settings

Users can navigate to the settings page by clicking the settings icon under the Navigation Pane as shown in **Figure 4 & Figure 5**. Upon clicking on the settings icon, the Selection Pane is populated with “Window Settings” and “User Settings”.

#### 3.3.1 Window Settings

Upon clicking “Window Settings” under the selection pane populates the description pane with a few basic application settings. Users can enable disable or enable notifications under “Window Settings”.

#### 3.3.2 User Settings

Upon clicking “User Settings” under the selection pane populates the description pane with a few user specific settings such as “Online Status”, “Edit Display Picture” and the ability to add a short status message.

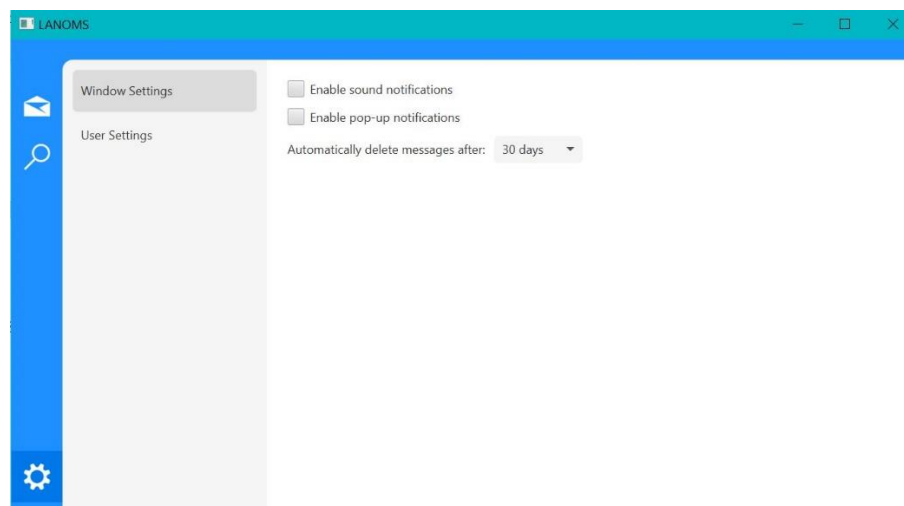


Figure 4 Settings / Window Settings

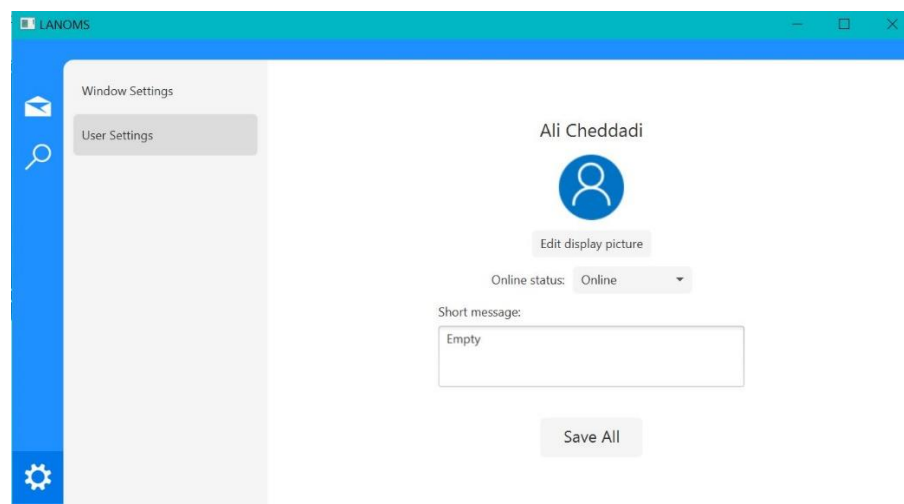


Figure 5 User Settings